

# NORD AQUARIUS 82,400 DWT Bulk Carrier 35

[Contents](#)

[By Builder](#)

[By Ship Type](#)



**NORD AQUARIUS** 82,400 DWT Bulk Carrier 35[Contents](#)[By Builder](#)[By Ship Type](#)

Japan Marine United Corporation (JMU) delivered "NORD AQUARIUS", the 82,400 DWT Bulk Carrier at its Tsu Shipyard on 31st May 2022.

**Features**

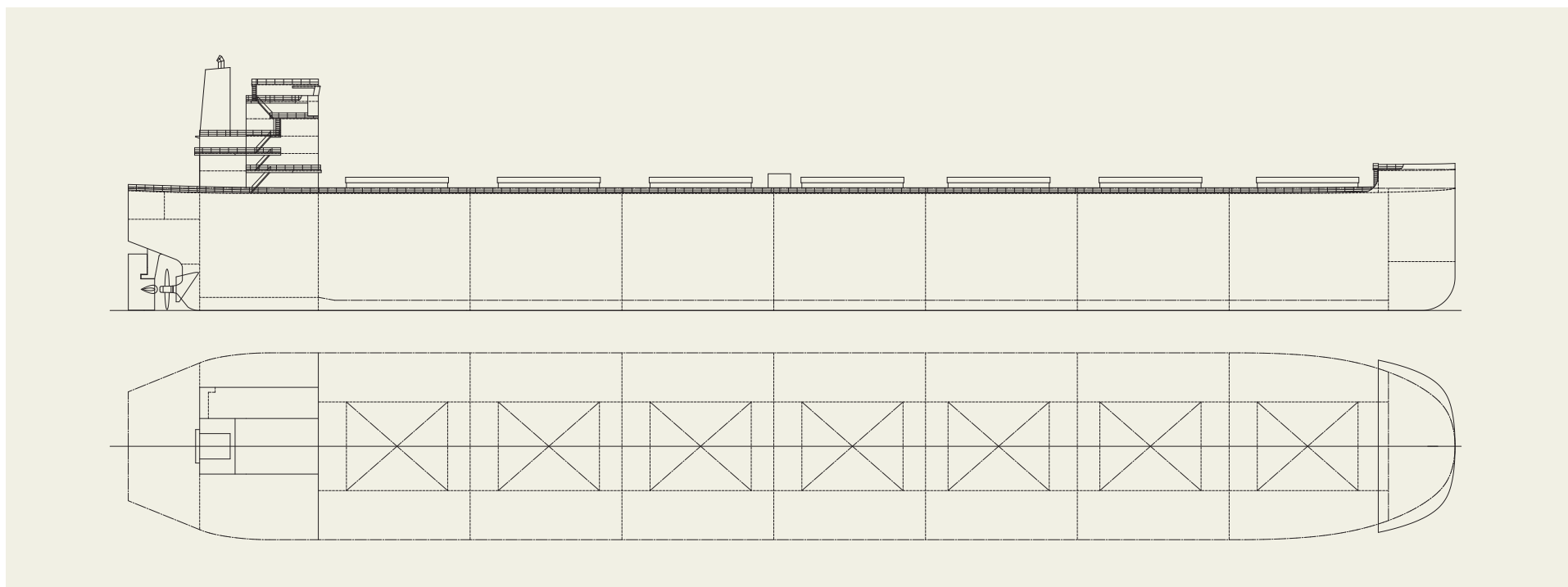
1. This vessel is JMU's J-Series 82,400DWT type bulk carrier (J82BC), which is an evolution of the previous G-Series 80,800 DWT type bulk carrier (G81BC), as the next generation of Panamax bulk carrier.
2. The most important features of this vessel are, improved fuel consumption and enhanced cargo loading capacity under the restriction of ship's dimensions as Panamax bulk carrier by JMU's accumulated technology.

3. Performance under actual seagoing condition has been improved by adopting a low wind resistance shape superstructure.
4. By optimizing our proprietary energy-saving devices, Su-

per Stream Duct®, SURF-BULB®, and ALV-Fin®, the vessel has achieved significant fuel savings.

**PRINCIPAL PARTICULARS**

Length (o.a.).....	229.00 m	Deadweight.....	82,375
Breadth (mld.).....	32.26 m	Main engine.....	MAN-B&W 6S60ME-C8.5-EGRBP
Depth (mld.).....	20.20 m	Complement.....	25
Draft (mld.).....	14.55 m	Classification.....	NK
Gross tonnage.....	44,618	Builder.....	JMU





# WISDOM DIVA 82,216 DWT Bulk Carrier 36

[Contents](#)

[By Builder](#)

[By Ship Type](#)



**WISDOM DIVA** 82,216 DWT Bulk Carrier 36

Contents By Builder By Ship Type

Oshima Shipbuilding Co., Ltd. delivered WISDOM DIVA, a 82,216-DWT bulk carrier, to Minsheng Zhijie (Tianjin) Shipping Leasing Company Limited in May 2023.

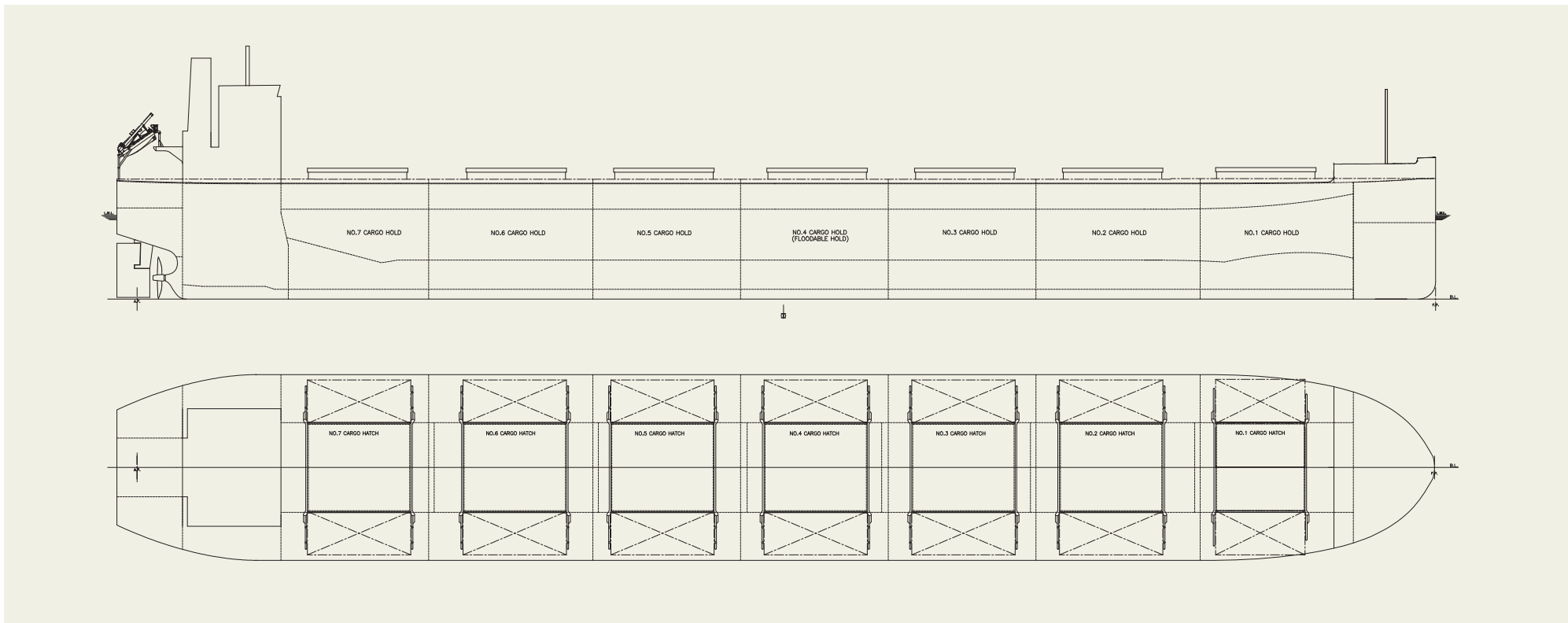
**Features**

1. This vessel has largest deadweight of Panamax bulkers in the world with shallow draft and Wide hatch cover improves cargo handling efficiency.
2. Advanced Flipper Fins & Rudder Fin which improve propulsion efficiency are installed. Special bow form, Seaworthy Bow improves speed performance in rough

**PRINCIPAL PARTICULARS**

Length (o.a.).....	228.995 m	Main engine .....	MITSUI MAN B&W 5S60ME-C10.5-EGRBP
Breadth (mld.).....	32.26 m	MCR (kw x rpm) .....	7,760 kW x 84.0 rpm
Depth (mld.).....	19.98 m	Speed (service).....	14.30 knots
Draft (mld.).....	14.480 m	Complement.....	25
Gross tonnage.....	43366	Classification.....	NK
Deadweight.....	82,216 MT	HLoading capacity (grain).....	97,416 m <sup>3</sup>
		Builder.....	Oshima Shipbuilding Co., Ltd.

sea conditions as compared to ordinary bows.





# NORA SCHULTE 81,957 DWT Bulk Carrier 37

[Contents](#)

[By Builder](#)

[By Ship Type](#)





**NORA SCHULTE** 81,957 DWT Bulk Carrier 37

Contents

By Builder

By Ship Type

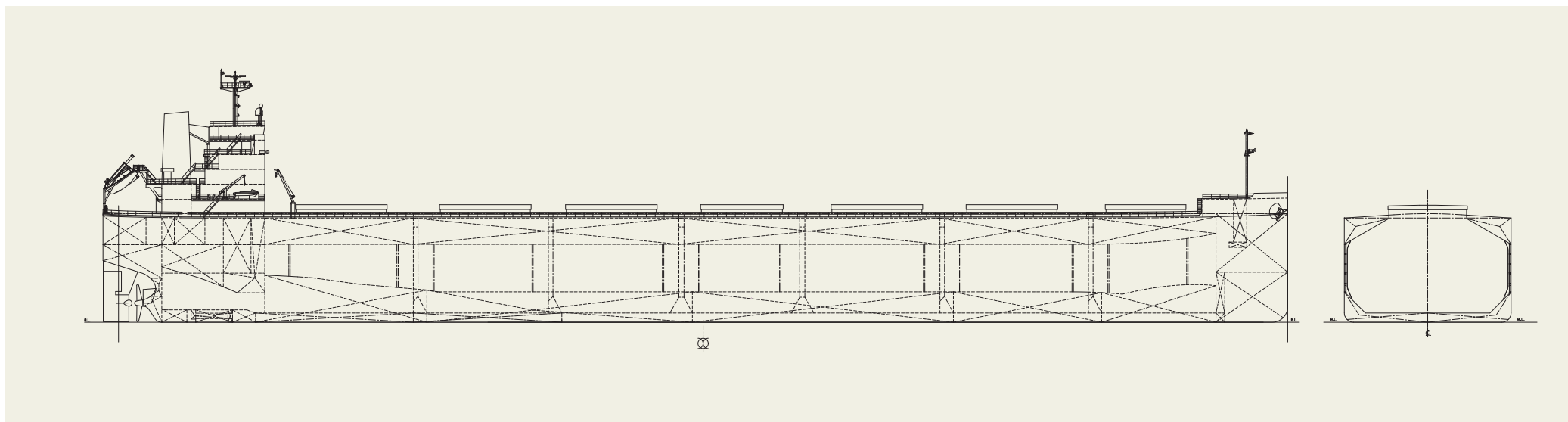
The 81,957 dwt bulk carrier NORA SCHULTE was built at SHIN KURUSHIMA SANOYAS SHIPBUILDING CO., LTD. and delivered to a Singaporean Owner in June 2023.

**Features**

1. The vessel has Seven (7) cargo holds.
2. The upper deck hatch covers are side rolling type and operated by hydraulic motors and chains.
3. The patented energy saving devices such as SANOYAS developed "STF" (Sanoyas-Tandem-Fin), ACE DUCT (Sanoyas Advanced flow Controlling and Energy saving DUCT) and advanced rudder bulb/fin construction are applied.

**PRINCIPAL PARTICULARS**

Length (o.a.).....	229.00 m	MCR (kw x min <sup>-1</sup> ).....	7,660 kW x 79.0 min <sup>-1</sup>
Breadth (mld.).....	32.24 m	NOR (kw x min <sup>-1</sup> ).....	6,450 kW x about 74.6 min <sup>-1</sup>
Depth (mld.).....	20.15 m	Speed (service).....	14.1 knots
Draft (mld.).....	14.57 m	Complement.....	25P
Gross tonnage.....	43,442	Classification.....	NK
Deadweight.....	81,957 MT	Loading capacity (grain).....	97,034m <sup>3</sup>
Main engine.....	DIESEL UNITED-WIN GD 6X52	Builder:.....	Shin Kurushima Sanoyas Shipbuilding Co., Ltd.



# PERSISTENCE DIVA 88,100 DWT WIDE KAMSARMAX 38

[Contents](#)

[By Builder](#)

[By Ship Type](#)



**PERSISTENCE DIVA** 88,100 DWT WIDE KAMSARMAX 38

Contents

By Builder

By Ship Type

A new, larger ship that inherits the KAMSARMAX brand. The debut of KAMSARMAX has caused the wave of larger Panamax bulk carriers. Inheriting its brand-name, this next-generation WIDE KAMSARMAX has bigger cargo loading capacity by about 6,000 MT with further improved fuel efficiency.

**Features**

1. Fuel efficiency and environmental performance
  - The unique hull form, which reduces resistance, is paired with our exclusive fuel-efficiency technologies to improve the ship's performance.
  - Equipped with the environmental technologies devices to prevent the air pollution from the NOx and SOx emissions and marine pollution from the oil spillages, etc.
2. Versatility
  - Keeping the length of 229m makes the ship possible to

enter the Kamsar Port in the Republic of Guinea as well as about 90% of the ports that the KAMSARMAXs built by TSUNEISHI SHIPBUILDING have called at.

- Enable to carry the three major bulk cargos of iron ore, grains, coal, while alternate loading is possible for high-density cargo, such as iron ore.
  - Air draft was maintained at the same level as KAMSARMAX.
3. Loading performance

- The increase of 6,000 MT loading capacity has achieved by the wider beam and shallower draft, compared with the KAMSARMAX.

- Cargo capacity has increased by 5,300m<sup>3</sup> with bigger loading volumes of low-density cargo, such as grains.

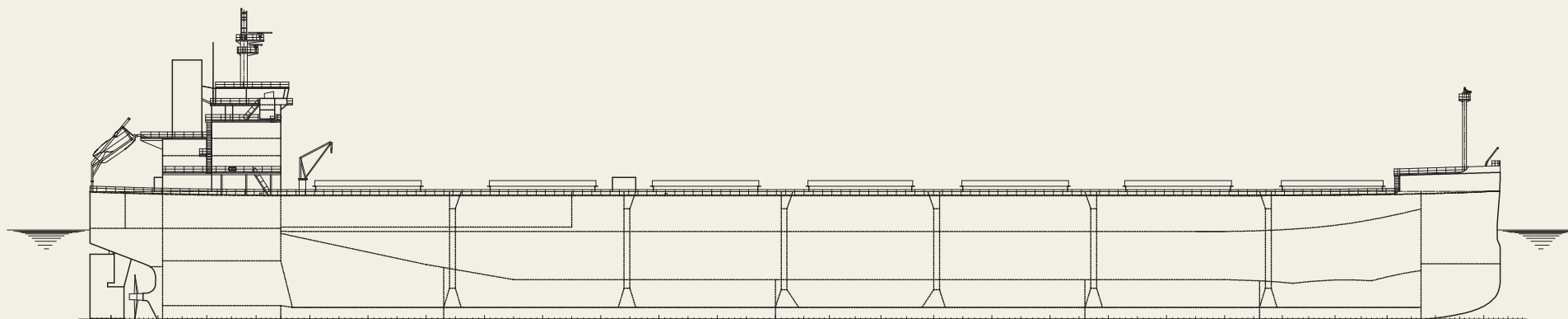
## 4. Comfortability

The original interior concept NEXT STYLE, utilizing exquisite design and indirect lighting, provides the crew with relaxation and comfort.

**PRINCIPAL PARTICULARS**

Length (o.a.) .....	229 m
Depth (mld.) .....	20 m
Draft (mld.) .....	14.45 m

Gross tonnage .....	47,400
Deadweight .....	88,100 mt
Loading capacity (grain) .....	103,300 m <sup>3</sup>
Builder: .....	Tsuneishi Shipbuilding Co., Ltd.





# DEFENDER 82,400 DWT KAMSARMAX 39

[Contents](#)

[By Builder](#)

[By Ship Type](#)



**DEFENDER** 82,400 DWT KAMSARMAX 39[Contents](#)[By Builder](#)[By Ship Type](#)

KAMSARMAX, an established world standard  
In response to needs for a larger-size Panamax bulk carrier, the KAMSARMAX, an innovative design with the maximum size in the category that can enter Kamsar Port in the Republic of Guinea, was developed. This ship model is favored for its optimal solutions of fuel efficiency, versatility, and cargo capacity. With over 380 ships being built, it holds the No.1 market share in the category.

**Features**

## 1. Fuel efficiency and environmental performance

- Comply with EEDI Phase 3 regulations.
- The unique hull form, which reduces resistance, is paired with our exclusive fuel-efficiency technologies to improve the ship's performance. A further improvement of about 31% reduction on the fuel consumption per ton-mile has been achieved successfully when comparing to the first KAMSARMAX delivered in 2005.

- Equipped with the environmental technologies devices to prevent the air pollution from the NOx and SOx emissions and marine pollution from the oil spillages, etc.
2. Versatility
- Length of 229 meters, which allows entry to Kamsar Port in the Republic of Guinea.
  - Designed with shallow draft and minimal air draft for versatility to accommodate the majority of major ports.
  - Excellent trading flexibility for carrying the three major bulk cargoes of iron ore, grains, and coal, as well as hot

coils.

## 3. Loading performance

- Achieve a deadweight of over 82,000 MT with the shallowest draft in its category.
- With a cargo capacity of 98,000m<sup>3</sup>, it can carry large volumes of low-density cargo, such as grains.

## 4. Comfortability

The original interior concept NEXT STYLE, utilizing exquisite design and indirect lighting, provides the crew with relaxation and comfort.

**PRINCIPAL PARTICULARS**

Length (o.a.) .....	229 m	Gross tonnage.....	44,000
Length (b.p.).....	32.26 m	Deadweight.....	82,400 mt
Depth (mld.).....	20.15 m	Loading capacity (grain).....	98,000 m <sup>3</sup>
Draft (mld.).....	14.55 m	Builder: .....	Tsuneishi Shipbuilding Co., Ltd.

